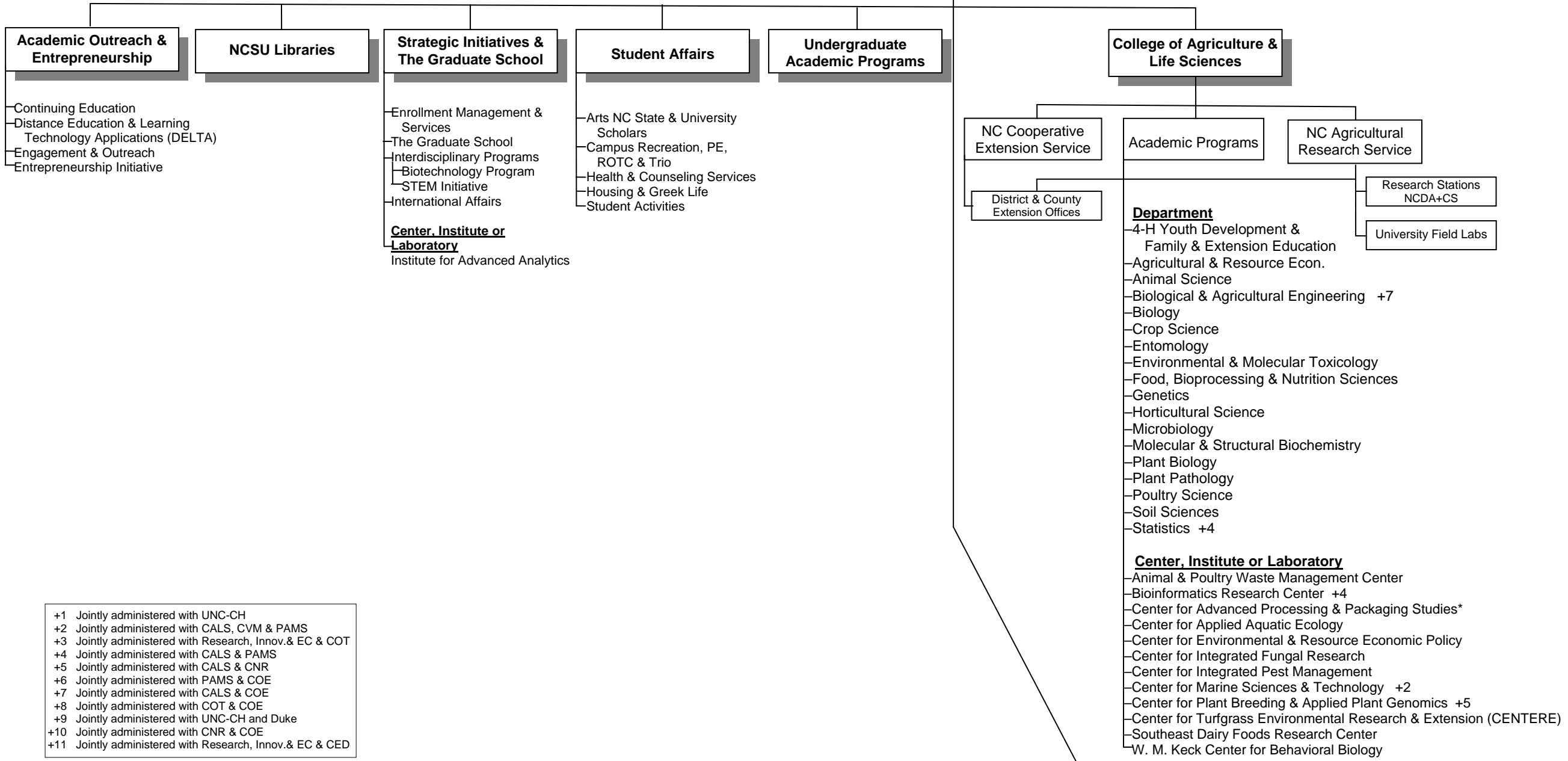


a

**Organization Chart of North Carolina State University – July 1, 2011
Chart B**

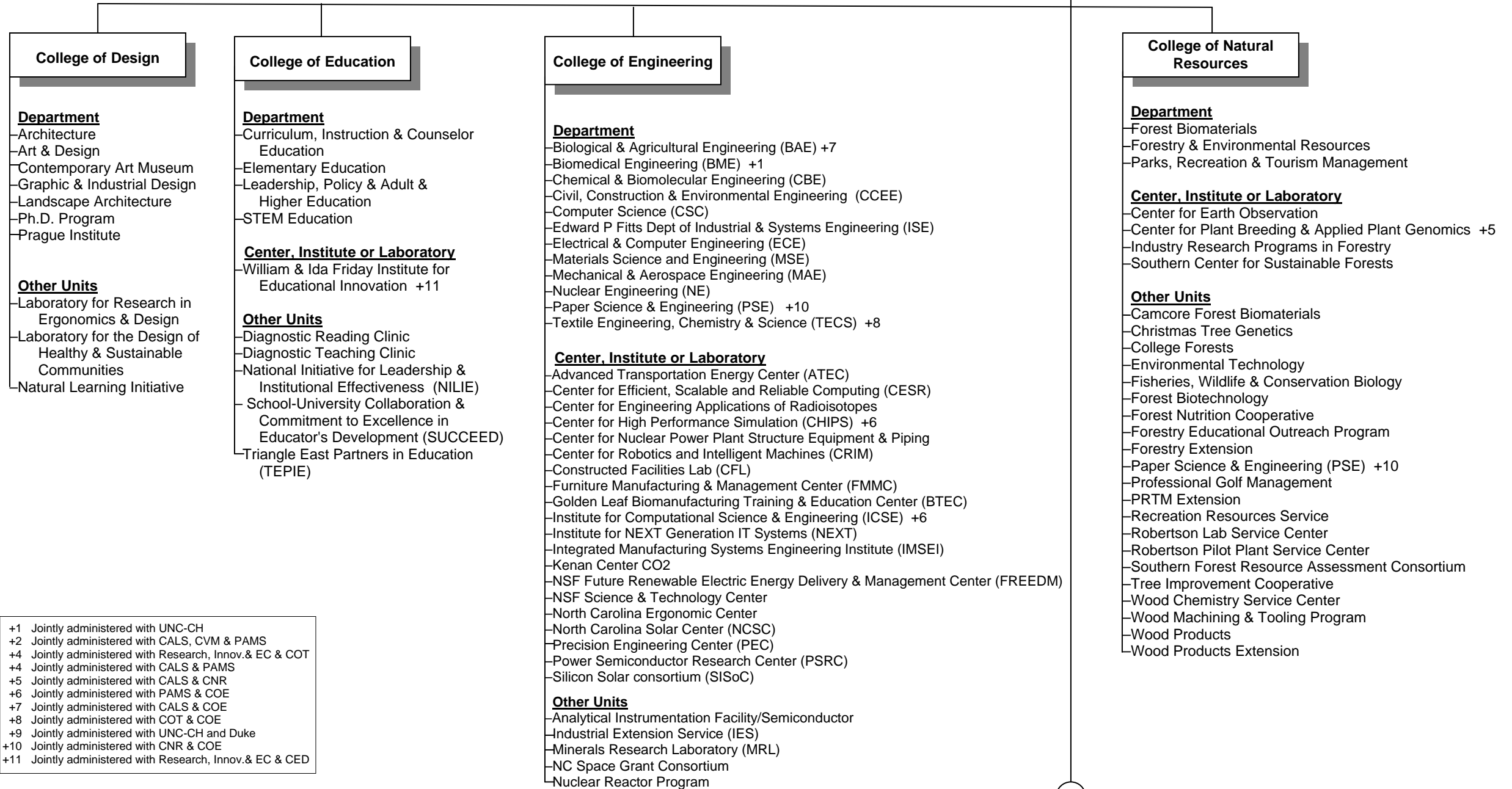


- +1 Jointly administered with UNC-CH
- +2 Jointly administered with CALS, CVM & PAMS
- +3 Jointly administered with Research, Innov.& EC & COT
- +4 Jointly administered with CALS & PAMS
- +5 Jointly administered with CALS & CNR
- +6 Jointly administered with PAMS & COE
- +7 Jointly administered with CALS & COE
- +8 Jointly administered with COT & COE
- +9 Jointly administered with UNC-CH and Duke
- +10 Jointly administered with CNR & COE
- +11 Jointly administered with Research, Innov.& EC & CED

* Research site only; The Ohio State University is the lead institution.

Organization Chart of North Carolina State University – January 1, 2012
Chart C

a

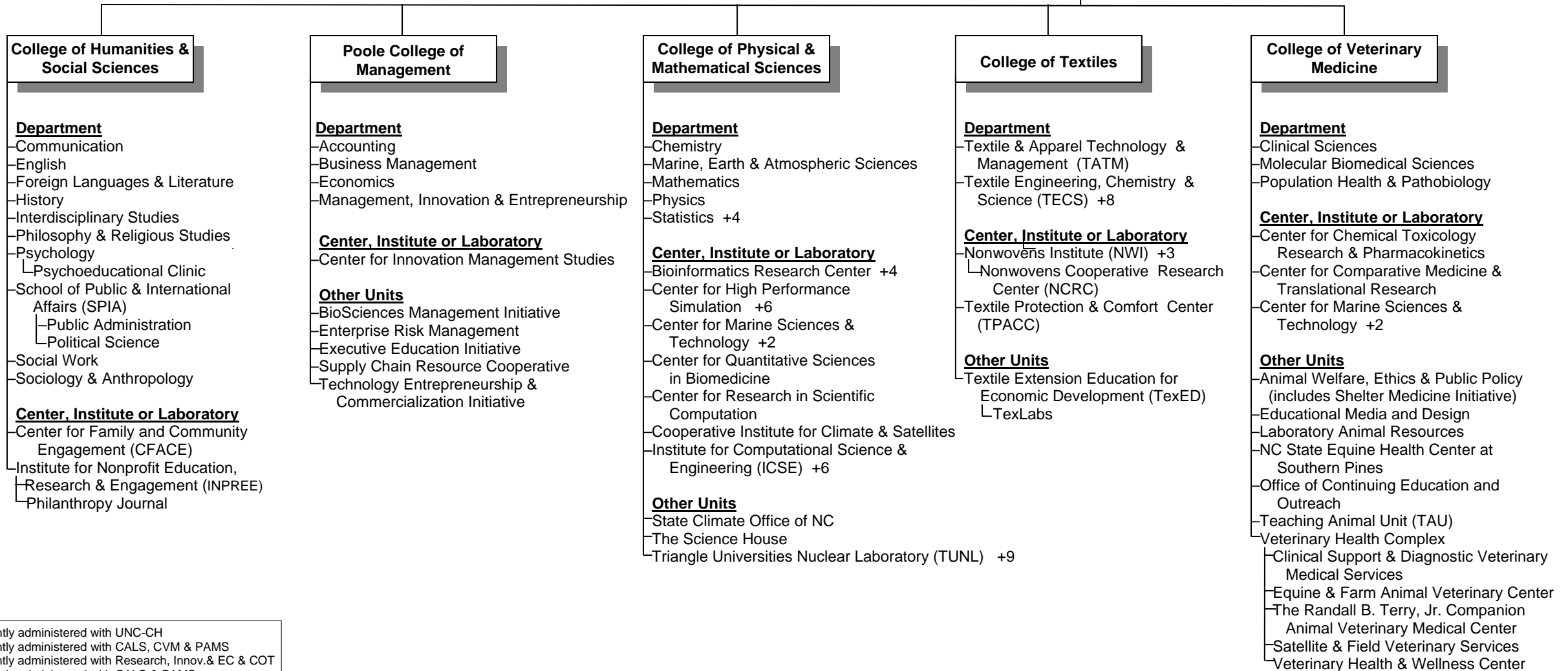


+1 Jointly administered with UNC-CH
 +2 Jointly administered with CALS, CVM & PAMS
 +4 Jointly administered with Research, Innov.& EC & COT
 +4 Jointly administered with CALS & PAMS
 +5 Jointly administered with CALS & CNR
 +6 Jointly administered with PAMS & COE
 +7 Jointly administered with CALS & COE
 +8 Jointly administered with COT & COE
 +9 Jointly administered with UNC-CH and Duke
 +10 Jointly administered with CNR & COE
 +11 Jointly administered with Research, Innov.& EC & CED

a

Organization Chart of North Carolina State University – January 1, 2012
Chart D

a



- +1 Jointly administered with UNC-CH
- +2 Jointly administered with CALS, CVM & PAMS
- +3 Jointly administered with Research, Innov.& EC & COT
- +4 Jointly administered with CALS & PAMS
- +5 Jointly administered with CALS & CNR
- +6 Jointly administered with PAMS & COE
- +7 Jointly administered with CALS & COE
- +8 Jointly administered with COT & COE
- +9 Jointly administered with UNC-CH and Duke
- +10 Jointly administered with CNR & COE
- +11 Jointly administered with Research, Innov.& EC & CED